



**WE'VE GOT IT COVERED**



UK manufactured  
Lead free  
State-of-the-art high  
definition digital printing





Shower and bathroom panels introduction	3
Premium collection	4
Honeycomb collection	5
Classic collection	6
Finishing trims – Aluminium	6
Finishing trims – PVC	6
Feature walls	7



Decors – 250mm x 7.5mm	8-11
Decors – 400mm x 7.5mm	12
Finishing trims – PVC	13
Decors – 400mm x 5mm	14
Cladding	14
Coving	15
Finishing trim	15



# SHOWER & BATHROOM PANELS



## CASCAD The complete wet space solution

The perfect wall panel solution for any bathroom, shower or wetroom – smart looking, easy to install and easy to clean, Cascade™ Shower Panels provide a flush waterproof and moisture resistant surface for new or existing walls – and can be fixed to all sorts of surfaces. Their high gloss, water repellent surfaces offer additional insulation and sound proofing qualities and can be fitted over existing tiles with no grouting.

The extra wide panels fit together easily\* and are available in a range of colours with a range of finishing trims – all backed with a 10 year guarantee. Ideal for wet spaces



### Technical Information:

- Width: 1m, Height: 2.4m, Thickness: 10mm
- Light and easy to handle
- Waterproof, rot proof, hygienic
- Use product between -20°C and +60°C
- Only a low tack masking tape may be used during installation and removed immediately afterwards
- Simple to cut using a fine toothed saw
- Edging and finishing trims available
- Wide range of colours

### 10 Year Guarantee

For internal use only. When installed and maintained as per our instructions the product is covered by a 10 year guarantee against crazing or fading due to UV light.

### Care & Maintenance

Cascade™ Shower Panels are hygienic and easier to maintain than tiles, with none of the grouting that discolours over time. To keep panels looking as good as new, simply wipe down with hot soapy water and a soft cloth. Abrasive cleaners must not be used.

\*See website for fitting instructions

[www.cascadeshowerpanels.co.uk](http://www.cascadeshowerpanels.co.uk)



# CASCADE SHOWER PANELS | PREMIUM COLLECTION

2.4mtr x 1mtr x 10mm

2.4

Height

1000

Width

10mm

Thickness



## LONDON TILE

(High Gloss White)

Tile size - 250mm x 80mm

PW-1000-LT



## TREZZANO BLACK

(Gloss)

PW-1000-TB



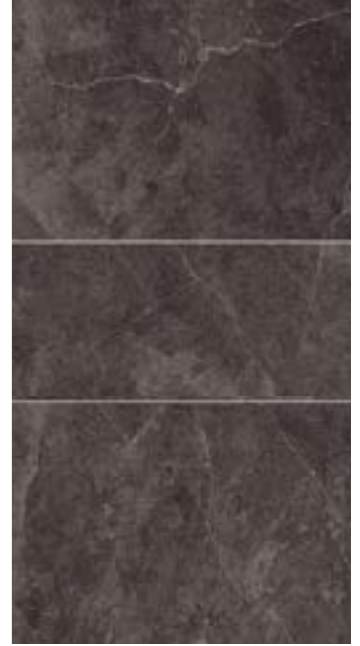
## HONEYCOMB HEX GREY



## HONEYCOMB HEX BRONZE

(Matt)

PW-1000-HHB



## HONEYCOMB TILE BRONZE

(Matt)

PW-1000-HTB



## ONYX (Matt)



Beige

PW-1000-OB



Grey

PW-1000-OG



## ROMAN (Blue Grey Matt)



Mosaic PW-1000-RMBG



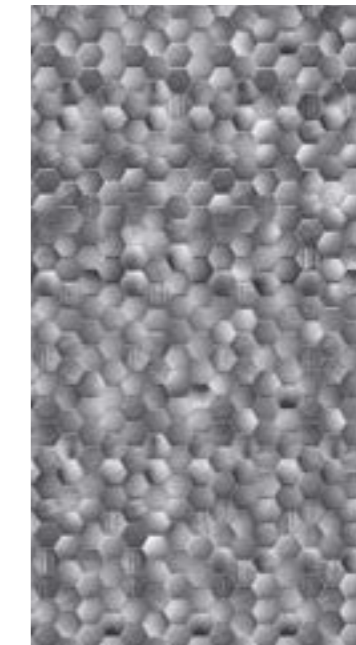
Tile PW-1000-RTBG



## GREY LIGHT OAK

(Matt)

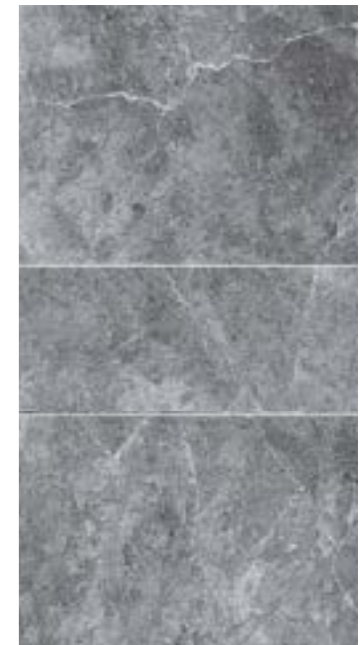
PW-1000-GLO



## HONEYCOMB HEX GREY

(Matt)

PW-1000-HHG



## HONEYCOMB TILE GREY

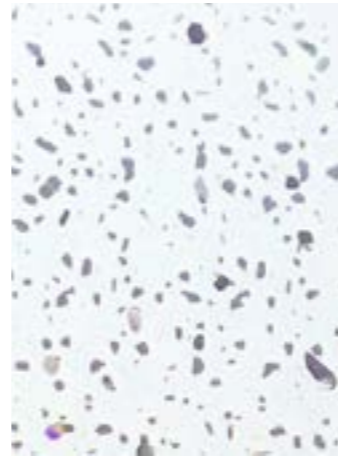
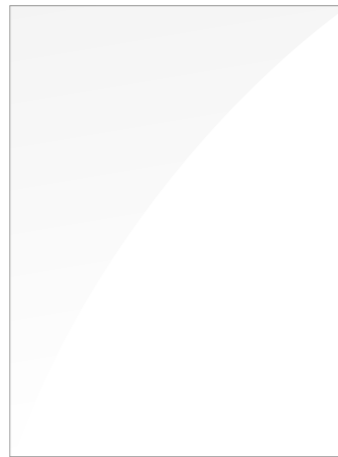
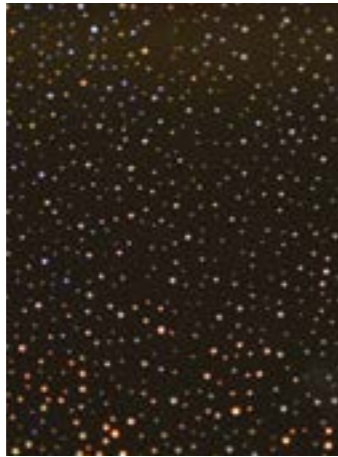
(Matt)

PW-1000-HTG



# CASCADE SHOWER PANELS | CLASSIC COLLECTION

2.4mtr x 1mtr x 10mm

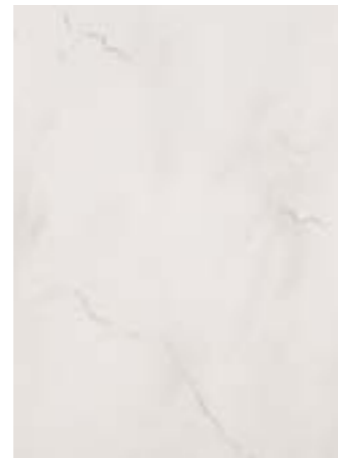
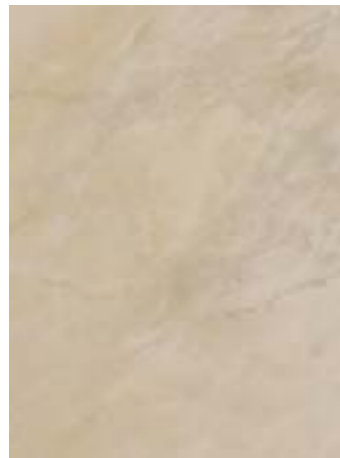


**BLACK SPARKLE**  
(Gloss)  
**PW-1000-BS**

**RAINBOW SPARKLE** (Gloss)  
**PW-1000-RS**

**HIGH GLOSS WHITE**  
**PW-1000-HGW**

**WHITE SPARKLE** (Gloss)  
**PW-1000-WS**

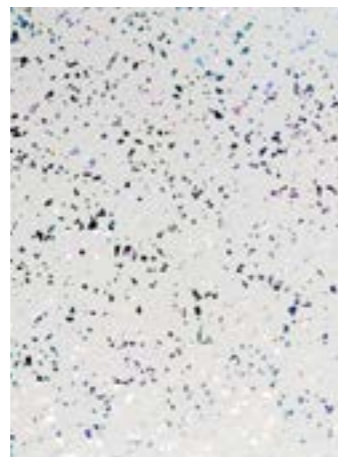
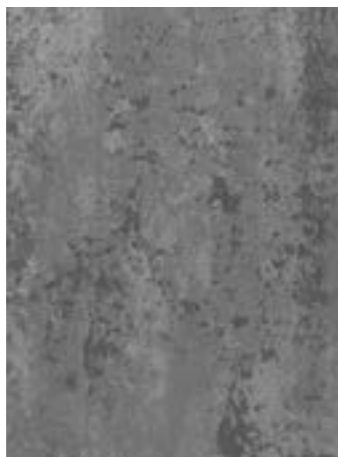


**PERGAMON**  
(Gloss)  
**PW-1000-PG**

**DARK GREY MARBLE** (Gloss)  
**PW-1000-GM**

**TRAVERTINE** (Gloss)  
**PW-1000-TRA**

**SUBTLE GREY MARBLE** (Gloss)  
**PW-1000-SGM**

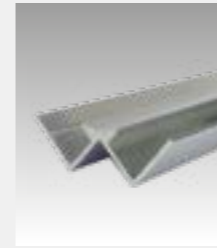


**CONCRETE GREY**  
(MATT)  
**PW-1000-CGM**

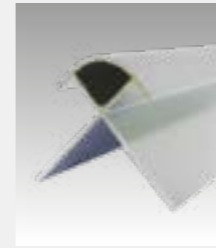
**LAVA GREY** (MATT)  
**PW-1000-LAR**

**LIGHT GREY PLATINUM SPARKLE** (Gloss)  
**PW-1000-LGPS**

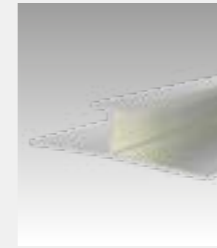
## FINISHING TRIMS - Aluminium - 10mm



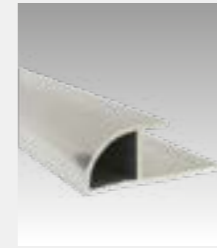
**Internal Corner**  
PW-INTC-Chrome



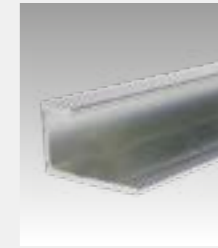
**External Corner**  
PW-EXTC-Chrome



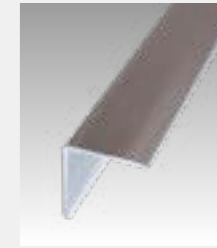
**Jointing Strip**  
PW-HSECT-Chrome



**Quadrant End Cap**  
PW-UQUAD-Chrome



**Edge Trim**  
PW-UCHAN-Chrome



**PW Angle**  
PW-RIDID-Chrome

## FINISHING TRIMS - PVC - 10mm

Available in Silver or White



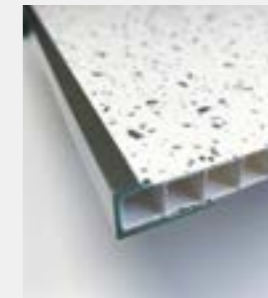
**Internal Corner (10mm)**  
INTC-03-10.0 - White  
INTC-22-10.0 - Silver



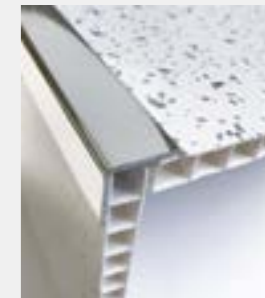
**External Corner (10mm)**  
EXTC-03-10.0 - White  
EXTC-22-10.3 - Silver



**H Section Joiner (10mm)**  
HSECT-03-10.0 - White  
HSECT-22-10.0 - Silver



**U-Channel (10mm)**  
ET-03-10.0 - White  
ET-22-10.0 - Silver



**PW-Angle (10mm)**  
RIGID 03-10.0 - White  
RIGID-22-10.0 - Silver

## FEATURE WALLS



**BEE PLAYROOM**



**LONDON SKYLINE**

PLEASE VISIT [WWW.CASCADESHOWERPANELS.CO.UK](http://WWW.CASCADESHOWERPANELS.CO.UK)  
TO SEE MORE NEW EXCITING DESIGNS.





# INTERNAL CLADDING AND CEILING



**NATURAL STONE ANTHRACITE**  
(Matt)



87832



**MOURINO**  
(Matt)



87833



**TRADITIONAL RED BRICK**  
(Matt)



87830



**GREY BRICK**  
(Matt)



87831



**ANTWERP GREY**  
(Gloss)



87837



**KLASSIC TILE GREY**  
(Gloss)



87847





**HAVANNA (Matt)**



**Silver Grey 87839 Dark Brown 87841**

Havana & Nassau are interchangeable styles so you can add a feature panel



**NASSAU (Matt)**



**Silver Grey 87840 Dark Brown 87842**



**METRO TILE (Gloss)**

Tile size - 125mm x 40mm



**87853**



Ceiling: Silver Mirror Line



**KLASSIC TILE (Matt)**



**Light Grey 87849 Deep Grey 87851 Graphite 87852 Beige 87850**



**LIGHT GREY OAK (Matt)**



**87848**

**DECORS**



**WHITE ASH WOODGRAIN (Matt) 87820**



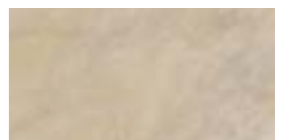
**BLACK ASH WOODGRAIN (Gloss) 87821**



**WHITE SPARKLE (Gloss) 87800**



**SUBTLE GREY MARBLE (Gloss) 87810**



**PERGAMON (Gloss) 87811**



**DARK GREY MARBLE (Gloss) 87834**



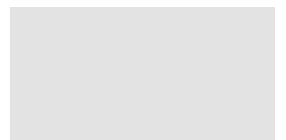
**CONCRETE GREY (Matt) 87835**



**LAVA (Matt) 87836**



**ORION (Gloss) 87844**



**MATT WHITE 87804 2.6 mtr\***



**SILVER EMBEDDED (Gloss) 88250 2.6 / 4 and 6 mtr\***



**WHITE HIGH GLOSS 87825 2.6 / 4 and 6 mtr\***



**WHITE MIRROR LINE 82250 2.6 and 4 mtr\***



# 400mm DECORS - 2.6mtr x 400mm x 7.5mm x 4 per pack



**TREZZANO**  
(Gloss)



PW-400-TB

**SANDSTONE**  
(Gloss)



PW-400-SS



**FERVENTA** (Gloss)



Beige PW-400-FB Grey PW-400-FG



**ROMAN GRAPHITE MATT**



Mosaic PW-400-RMG Tile PW-400-RTG

## FINISHING TRIMS - PVC - 7.5mm

Available in Chrome or White



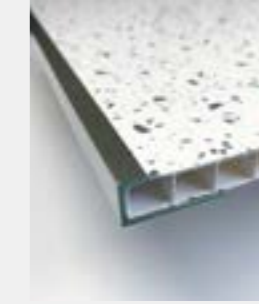
**Internal Corner**  
INTC-22-7.5 - Silver  
INTC-03-7.5 - White



**External Corner**  
EXTC-22-7.5 - Silver  
EXTC-03-7.5 - White



**H Section Joiner**  
HSECT-22-7.5 - Silver



**U-Channel**  
ET-22-7.5 - Silver  
ET-03-7.5 - white



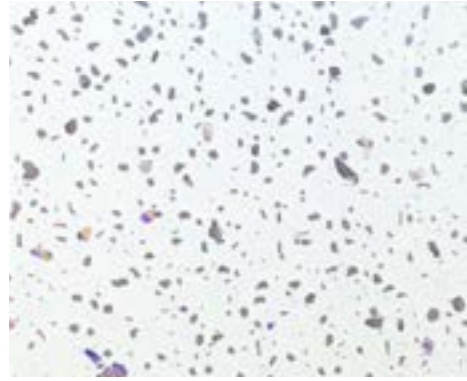
**PW-Angle**  
RIGID-22-10 - Silver  
RIGID 03-10 - White



**HONEYCOMB  
TILE BRONZE**

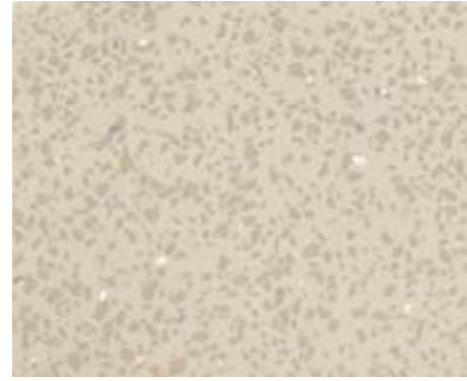


## 5mm DECORS - 2.6mtr x 250mm x 5mm x 4 per pack



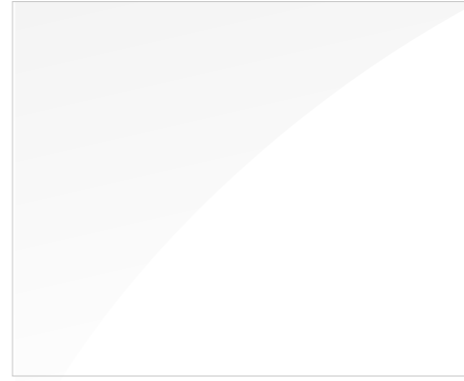
**WHITE SPARKLE**  
5mm x 250mm x 2.6m  
4 in pack

**84800**



**BEIGE SPARKLE**  
5mm x 250mm x 2.6m  
4 in pack

**84803**



**HIGH GLOSS WHITE**  
5mm x 250mm x 2.6m  
4 in pack

**84825**

### FINISHING TRIMS – PVC - 5mm

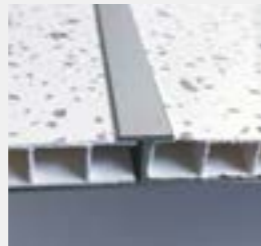
Available in Chrome or White



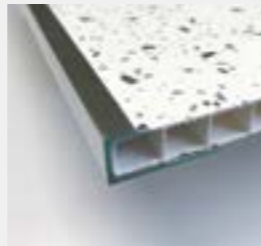
**Internal Corner**  
INTC-22 - Silver  
INTC-03 - White



**External Corner**  
EXTC-22 - Silver  
EXTC-03 - White



**H Section Joiner**  
HSECT-22 - Silver  
HSECT-03 - White

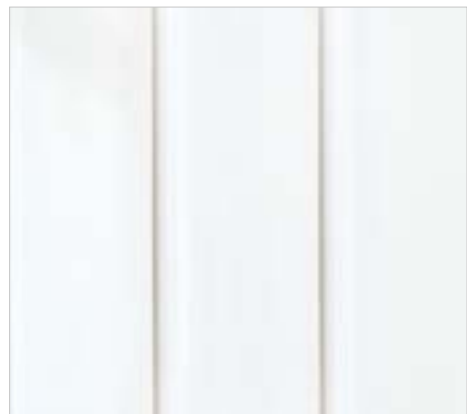


**U-Channel**  
ET-22 - Silver  
ET-03 - White



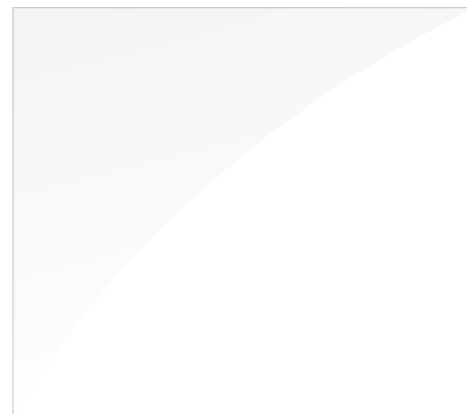
**PW-Angle**  
RIGID-22-10 Silver  
RIGID-03-10 White

## CLADDING - 10mm PVC



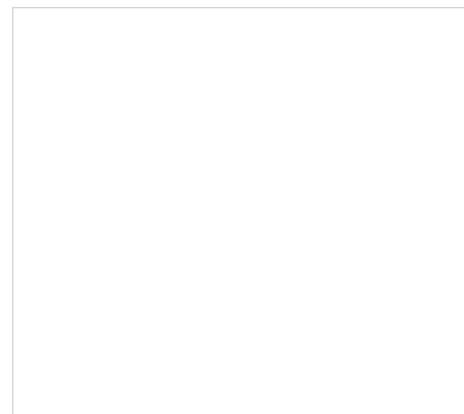
**3 PLANK CEILING  
CLADDING SHINING WHITE\***  
10mm x 300mm x 6m  
4 in pack

**4525**



**SHINING WHITE\***  
10mm x 250mm x 2.7m/4.5m/6m  
4 in pack

**6525**



**MATT WHITE\***  
10mm x 250mm x 3m/4m/5m/6m  
4 in pack

**6503**

\*These products are manufactured in Belgium.

## COVINGS

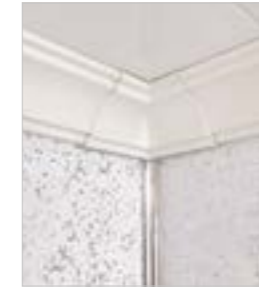
Our coving kits enable you to complete every panel installation project with a clean, neat, bright white professional finish. 6m lengths with internal, exterior and joiners available.



**1 PART 25MM**  
Part No.14



**2 PART 40MM**  
Part No.21  
Also available in 25mm – Part No.24



**INTERNAL CORNER**  
Available in 25mm  
and 40mm



**EXTERNAL CORNER**  
Available in 25mm  
and 40mm



**JOINER**  
Available in 25mm  
and 40mm

### Cladseal bath and shower sealing kit

Designed to provide long term, high performance waterproofing for wall panels fitted around baths and showers, Cladseal comes as a complete, easy to use kit (CSKW) – with all the components needed to create a professional, watertight finish.

#### KIT INCLUDES:

- 2 strips (1.85m)
- 2 sealants
- 1 mitre box
- 2 end caps
- 1 spatula
- 3 wipes

**CLADSEAL KIT**  
CSKW



**STRIPS SOLD  
SEPARATELY**  
SCS

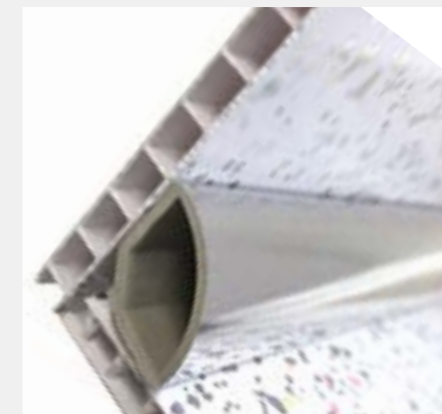


For fitting instructions please see website:

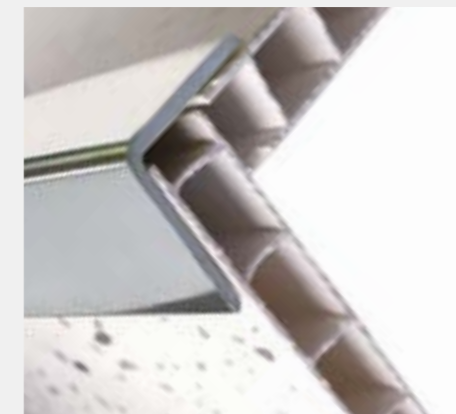
[www.plastivan.co.uk](http://www.plastivan.co.uk) or [www.cascadeshowerpanels.co.uk](http://www.cascadeshowerpanels.co.uk)



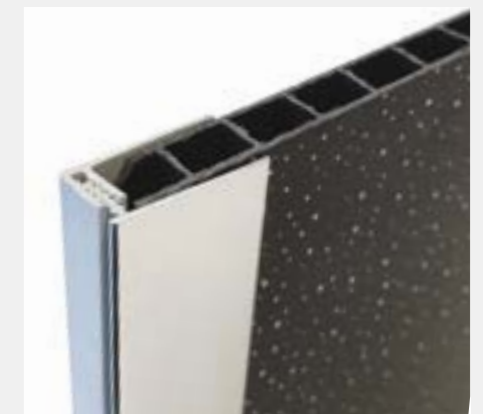
### FINISHING TRIMS



**QUADRANT**  
Silver  
QR15ZL



**EXTERNAL CORNER**  
Silver  
120ZL



**2 PART START & EDGE**  
Silver  
97ZL





Havana Silver

## General information for panels and cladding

**Maintenance:** Use normal cleaning agents i.e. hot soapy water and a soft cloth or sponge. Solvents are not recommended, neither should aggressive cleaning agents be used.

**Performance:** Plastivan Decor is for internal use only, when installed and maintained as per our instructions, the product is covered by a 10 year guarantee against crazing or fading due to U.V light. Only a low tack masking tape may be used during installation and must be removed immediately afterwards.

**Preparation:** During the course of manufacture some variation in shade or pattern can occur. Sufficient panels for the area to be covered should be obtained in one consignment, all of the same production date (found on reverse of boards) to ensure a supply of compatible shades. Please ensure that the builder or installer is aware of this information as no liability can be accepted once panels have been fitted.

**Fitting instructions available on websites below.**

For more information please contact us on:

**Tel: 0117 300 5625    Fax: 0117 971 5028    Email: [sales@plastivan.co.uk](mailto:sales@plastivan.co.uk)    Web: [www.plastivan.co.uk](http://www.plastivan.co.uk)**

Plastivan Ltd, Unit 4 Bonville Industrial Estate, Bonville Road, Brislington, Bristol BS4 5QU



[www.cascadeshowerpanels.co.uk](http://www.cascadeshowerpanels.co.uk)

Copyright © Plastivan 2019. All rights reserved.

This brochure may not be copied, scanned, reproduced, translated or converted to any electronic or machine-readable form in whole or in part without prior written permission from Plastivan Ltd.

Note: Due to the limitations of the printing process colours may vary from those shown in this brochure.

Registered in Cardiff No. 2922878

Code PMC76

 **PLASTIVAN**  
PVC and WPC Building Products